



INDOFINE Chemical Company, Inc.

121 Stryker Lane, Bldg. 30, Suite 1 • Hillsborough, NJ 08844 • U.S.A.

Phone: (908) 359-6778 • FAX: (908) 359-1179

website: www.indofinechemical.com

e-mail: chemical@indofinechemical.com

CERTIFICATE OF ANALYSIS

Cat No.: 19-709

Product: **2,3-DIMETHOXYPHENOL**

CAS Number: [5150-42-5]

Lot Number: 0605047

Chemical Formula: C₈H₁₀O₃

Molecular Weight: 154.17

Appearance: Pale yellow liquid

Melting point: 233-234°C

Solubility: Soluble in Chloroform

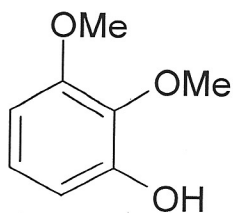
TLC: Hexane:Ethyl acetate (8:2)

NMR Spectrum: Enclosed

IR Spectrum: Enclosed

Storage: Cool dry place

Purity (HPLC): 98+%





INDOFINE Chemical Company, Inc.

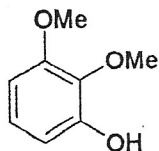
121 Stryker Lane, Bldg. 30, Suite 1 • Hillsborough, NJ 08844 • U.S.A.

Phone: (908) 359-6778 • FAX: (908) 359-1179

website: www.indofinechemical.com

e-mail: chemical@indofinechemical.com

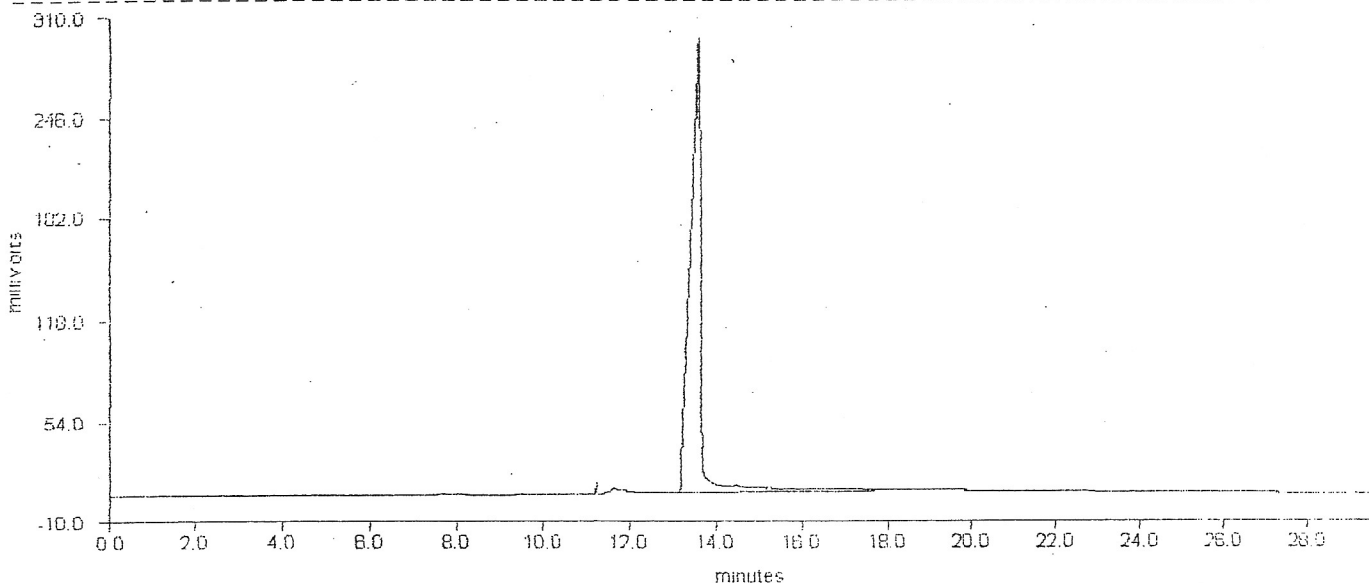
HPLC ANALYSIS



Catalog no.: 19-709
Product name: 2,3-Dimethoxyphenol
Lot No.: 0605047

DELTA CHROMATOGRAPHY DATA SYSTEM

STRIPCHART PLOT FOR CHROMATOGRAM - c:\deltaw\data\np-007.raw



DELTA CHROMATOGRAPHY DATA SYSTEM

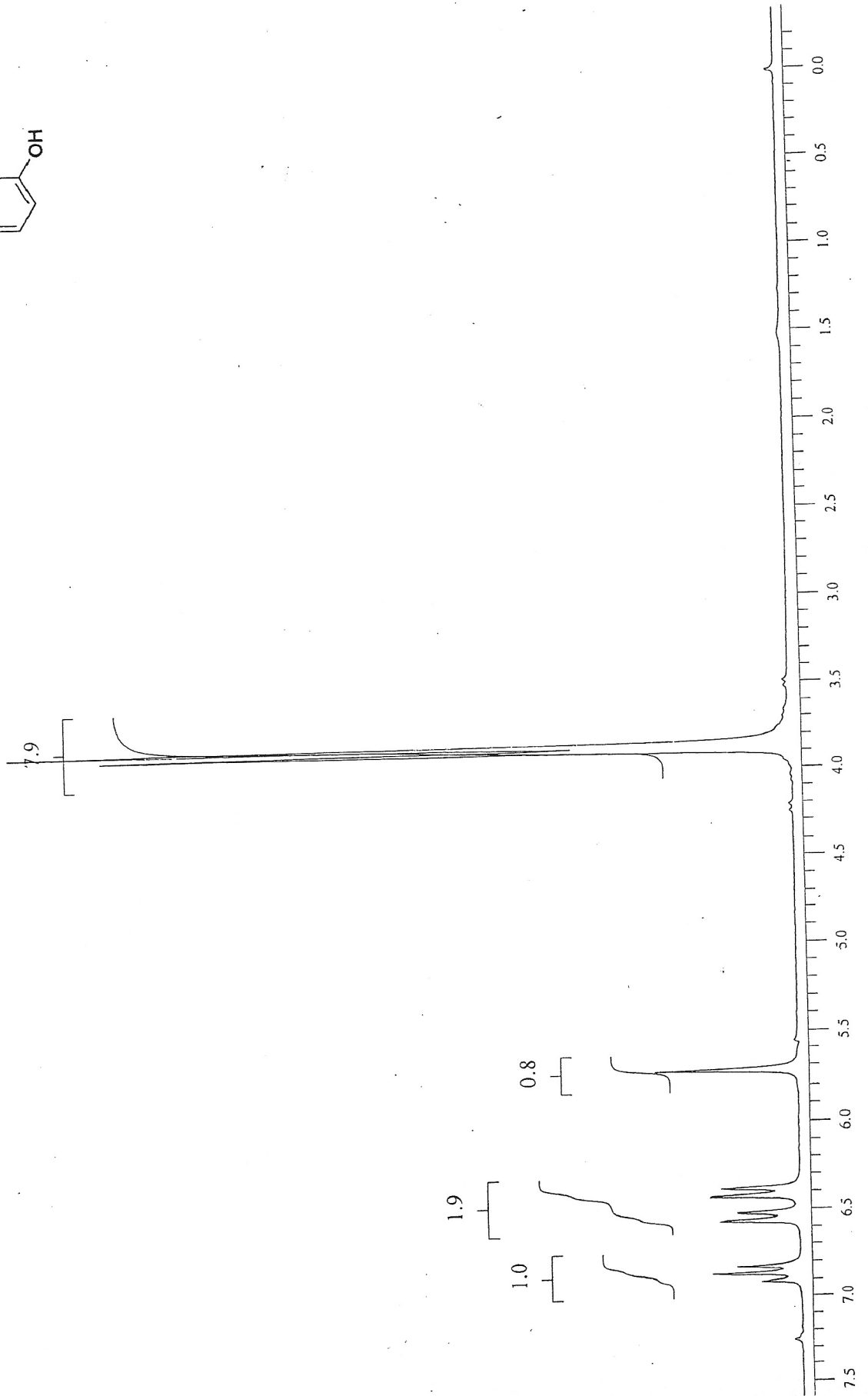
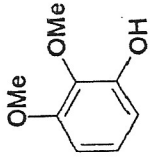
LISTING PEAK TABLE FOR CHROMATOGRAM - c:\deltaw\data\np-007.raw.RAW

#	Type Name	Ret. Time	Area(uVSec)	Height(mV)	Area Percent
1	MM	11.72	65204	2.5	1.2
2	MM	13.61	5386837	290.0	98.8



INDOFINE Chemical Company, Inc.
121 STRYKER LANE
BLDG. 30, SUITE 1
HILLSBOROUGH, NJ 08844

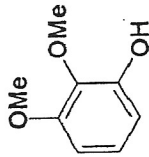
Catalog no.: 19-709
Product name: 2,3-Dimethoxyphenol
Lot No.: 0605047



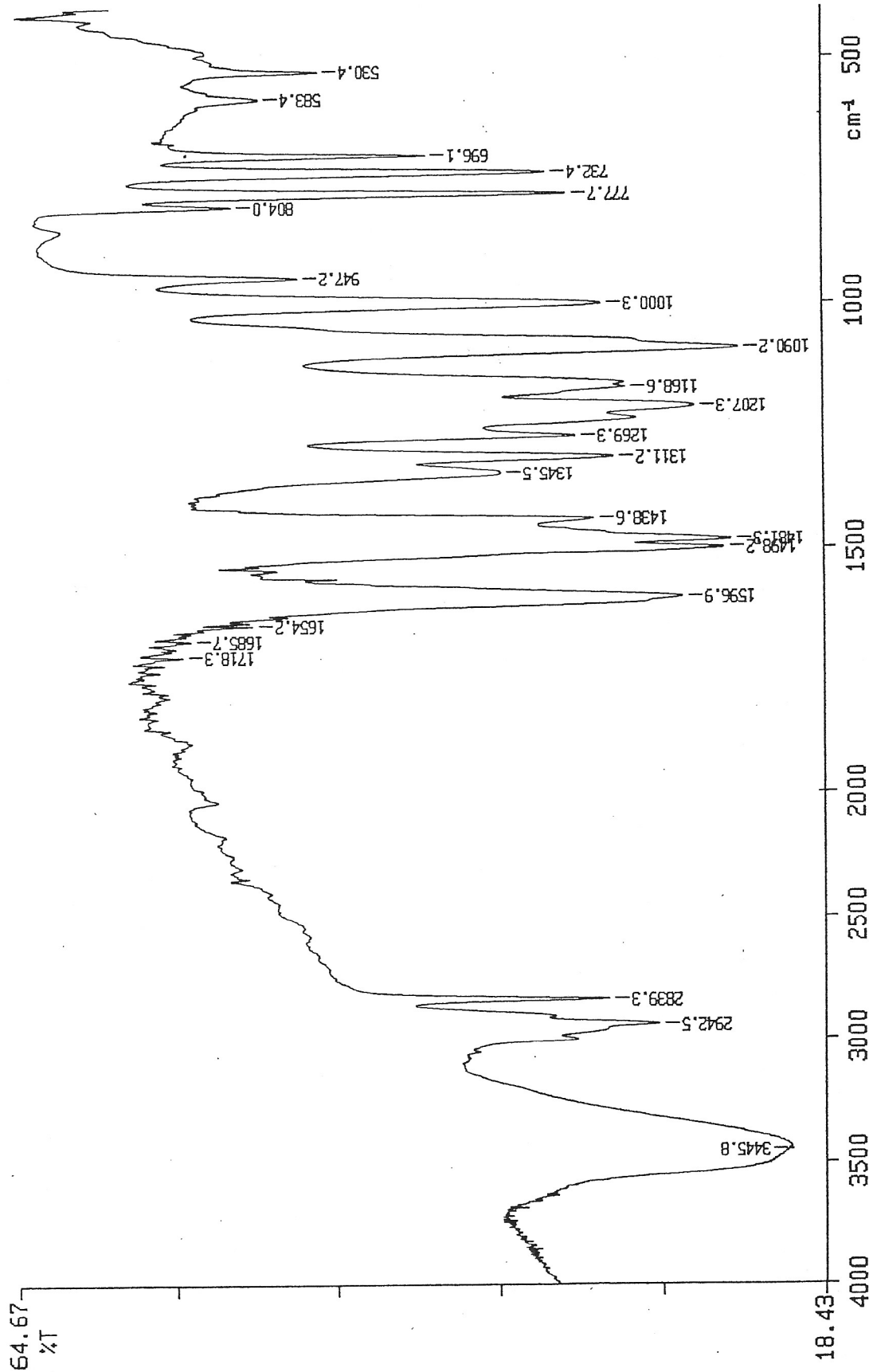


INDOFINE Chemical Company, Inc.
121 STRYKER LANE
BLDG. 30, SUITE 1
HILLSBOROUGH, NJ 08844

Catalog no.: 19-709
Product name: 2,3-Dimethoxyphenol
Lot No.: 0605047



PERKIN ELMER



X: 1 scan, 4.0cm-1